

*Next generation e-Commerce combining  
Hybris, IBM Watson and Adobe  
Experience Manager*

# *Agenda*

- Yaas
- Adobe Experience Manager
- IBM Watson
- Demo

# *What is YaaS?*

- Hybris as a Service
- Micro-service architecture
- Wide range of diverse bussiness services
- Ability to write and sell your own services

## *Why YaaS?*

- Scalable
- Highly customazible
- Rapidly adoptable
- Platform agnostic
- Easy to access



MARKET



BUILDER



DEVPORTAL

+

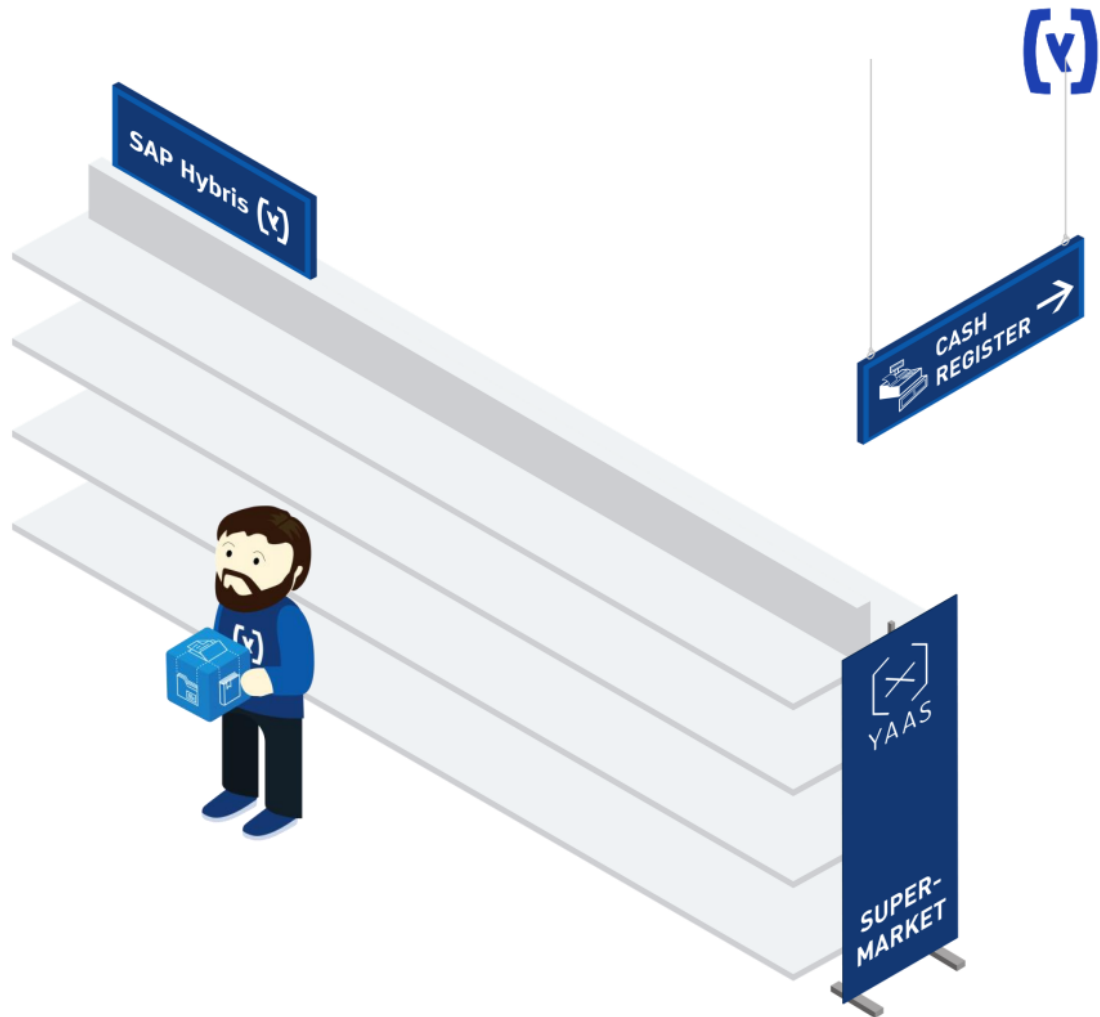


COMMUNITY

=



YAAS.IO



# What do you always need for transactional commerce?



## Products

Products on offer, inventory, etc.; categorized, probably



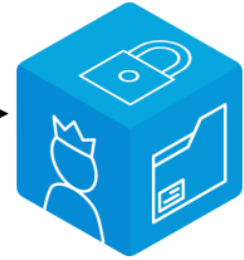
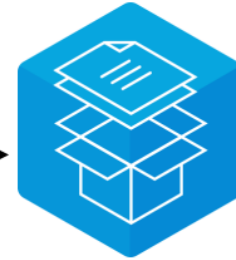
## Tax calculation

Because you have to



## Order history

To let users see their past purchases



## Shopping cart

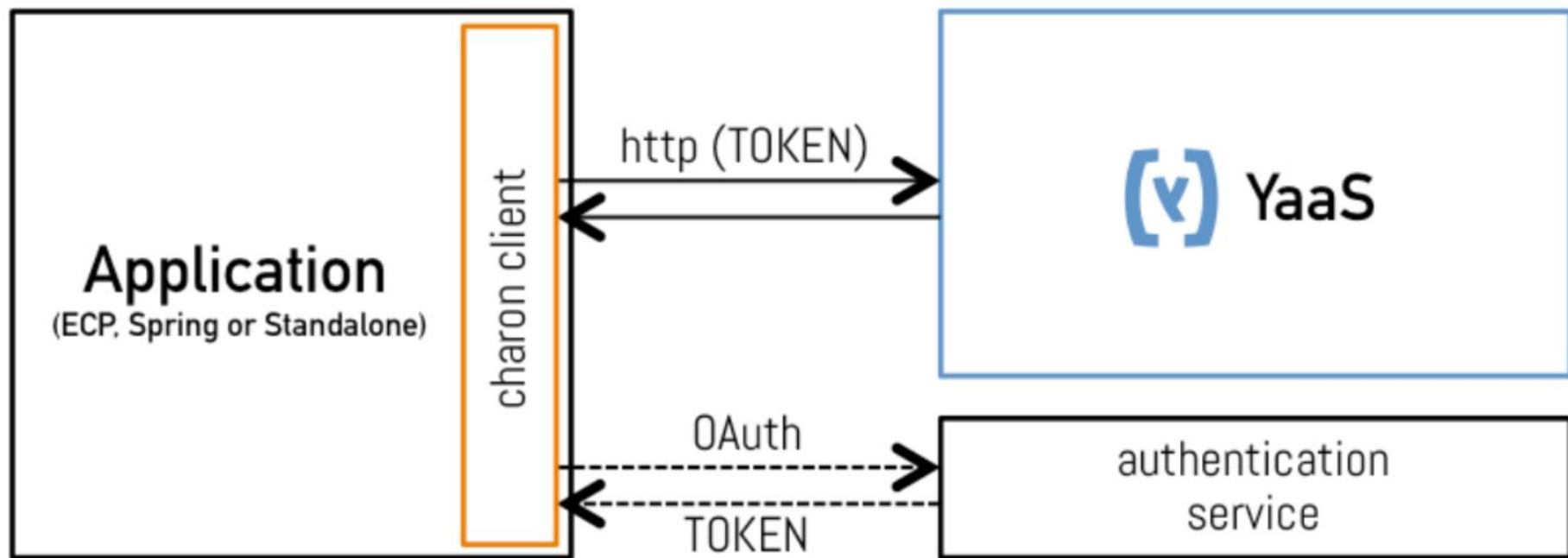
To group items for a transaction

## Checkout and payment

Because you want to sell something

## Customer records

To represent your users as they purchase something

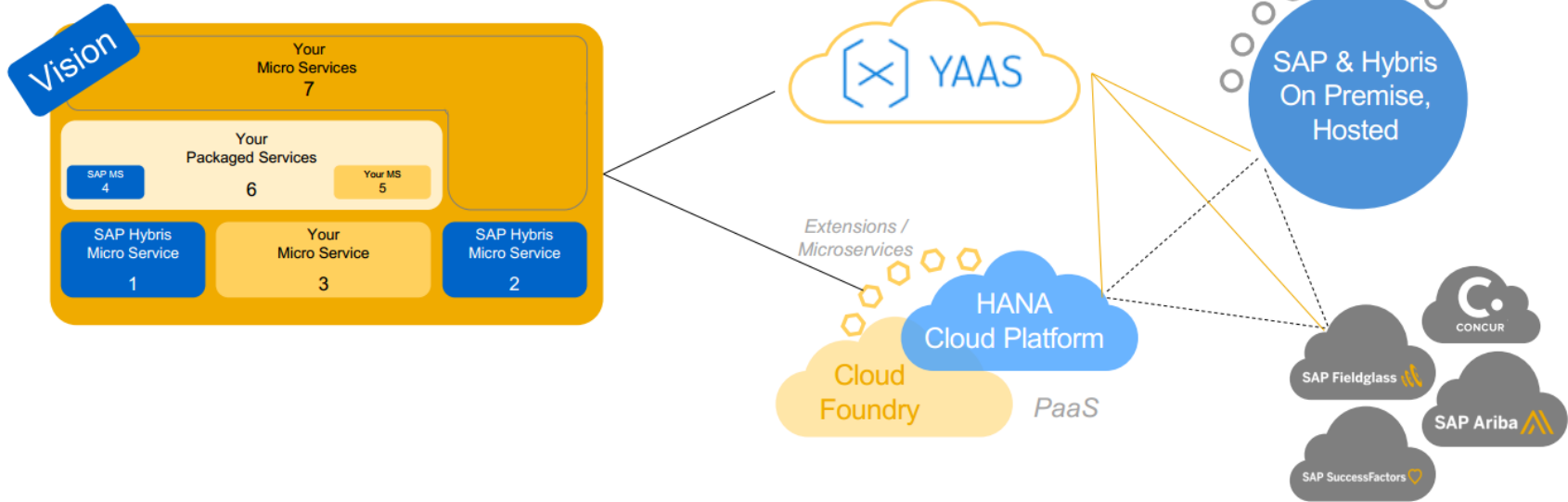


# Building and Consuming Packaged Services

## Partner Opportunity & Cloud Transformation



### Your Packaged Services @ YAAS.URL





# *Adobe Experience Manager*

# *Adobe Experience Manager*

- Enterprise Content Management System
- 2016 Gartner Magic Quadrant leader ( Web Content Management )



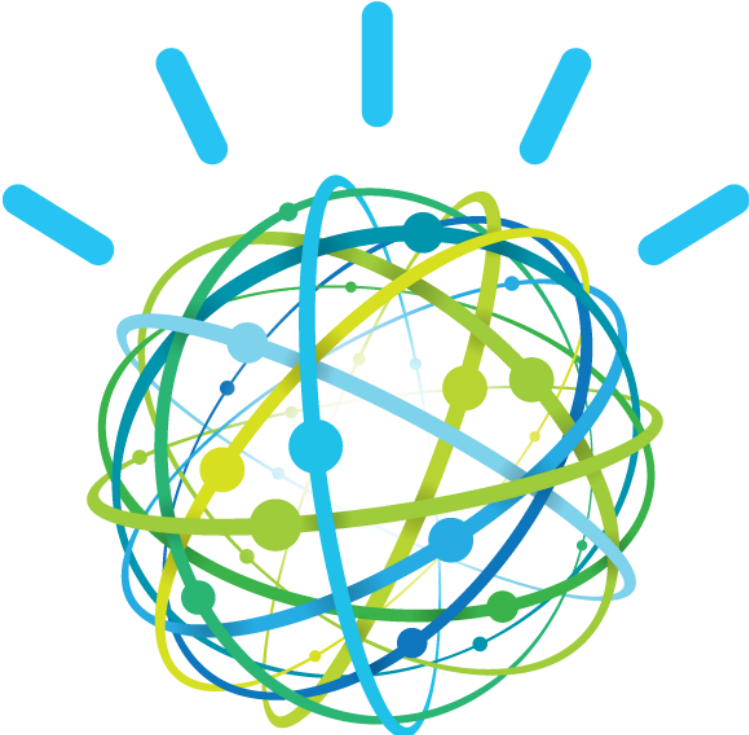
*User perspective*

A photograph of a cluttered workshop with dark wood walls. A workbench in the foreground is covered with various tools, including hammers, wrenches, and a vise. Shelves and a cabinet in the background are also filled with tools. A window on the right side of the image provides natural light. The overall atmosphere is one of a well-used, traditional craft space.

*Developer perspective*

# *Technology*

- OSGi-based framework (Apache Sling and Apache Felix)
- Java Content Repository - Apache Jackrabbit Oak
- Servlet engine - Eclipse Jetty
- Granite UI framework



# *IBM Watson*

- [www.ibm.com/watson/index.html](http://www.ibm.com/watson/index.html)
- “Watson is a cognitive technology that can think like a human.”
- Thomas J. Watson - IBM founder
- 2011. Jeopardy!
- AI + sophisticated analytical software
- Watson SDKs (<https://www.ibm.com/watson/developercloud/doc/common/getting-started-sdks.html>)

# *IBM Watson services in demo*

- Speech to Text
- Personality Insights
- Natural Language Understanding



# *Speech to Text*

- Convert human voice into written word
- Advanced statistical modeling techniques
- **Languages:** Supports Brazilian Portuguese, French, Japanese, Mandarin Chinese, Modern Standard Arabic, Spanish, UK English, and US English
- **Audio formats:** FLAC, PCM, WAV, Ogg format, WebM format, mu-law (or u-law) audio data, or basic audio.



# *Personality Insights*

- extracts personality characteristics based on how a person writes
- Big 5 Personality Traits, Values, and Needs



# *Natural Language Understanding*

- Analyze text to extract meta-data
- Features:
  - Categories
  - Concepts
  - Emotion
  - Entities
  - Keywords
  - Metadata
  - Relations
  - Semantic Roles
  - Sentiment



Demo



*Interested?*

Contact us on [ecx.io](mailto:croatia@ecx.io)



*Great minds think alike!  
What do you think?*

**ecx.io and IBM iX are looking for smart digital minds.**

# *Thank You*

© by ecx.io | Mai 17

This presentation and all of its content are the property of ecx.io. ecx.io are always at your service when it comes to implementing the ideas and solutions presented. ecx.io is free to use the content of this presentation for any other project or client. The transfer of documents to third parties, publication, reproduction, dissemination or other exploitation of the ideas and solutions is not permitted without the prior consent of ecx.io. Just give us a call.